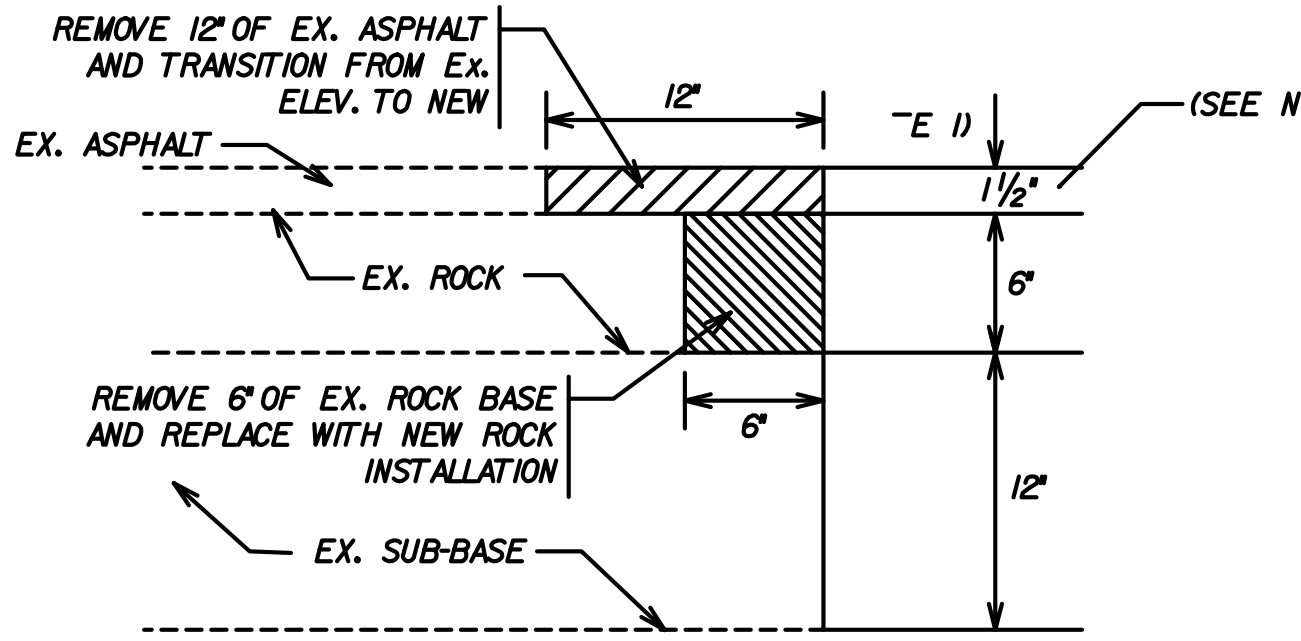
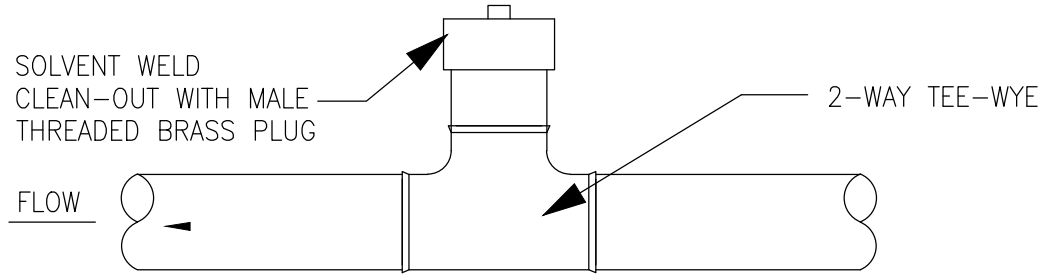


GENERAL NOTES

- ALL CONSTRUCTION SHALL CONFORM TO THE STANDARDS AND SPECIFICATIONS OF THE CITY OF LIGHTHOUSE POINT ENGINEERING.
- PRIOR TO CONSTRUCTION, THE CONTRACTOR SHALL GIVE TIMELY NOTIFICATION TO ALL UTILITY COMPANIES WITH FACILITIES IN THE AREA.
- THE LOCATION OF EXISTING FACILITIES WERE PLOTTED FROM AVAILABLE RECORDS. THE CONTRACTOR SHALL FIELD LOCATE ALL EXISTING UTILITIES PRIOR TO CONSTRUCTION.
- THE CONTRACTOR SHALL TAKE ALL NECESSARY PRECAUTIONS TO SAFEGUARD ALL EXISTING STRUCTURES, UTILITIES, AND SURVEY MARKERS.
- ALL SIDEWALKS AND PATIOS SHALL BE SLOPED AWAY FROM HOUSE.
- MAXIMUM GRASS SLOPES SHALL NOT EXCEED 4:1.
- CONTRACTOR SHALL COORDINATE GRADING PLAN WITH LANDSCAPE ARCHITECT.
- REMOVE ALL ORGANIC AND DELETRIOUS MATERIAL BETWEEN THE EDGE OF PAVEMENT AND RIGHT OF WAY LINE (1/4 SODDED SWALE). NO MATERIAL OF F.D.O.T. CLASS A-5, A-7 OR A-8 SHALL BE ALLOWED IN THE RIGHT OF WAY.



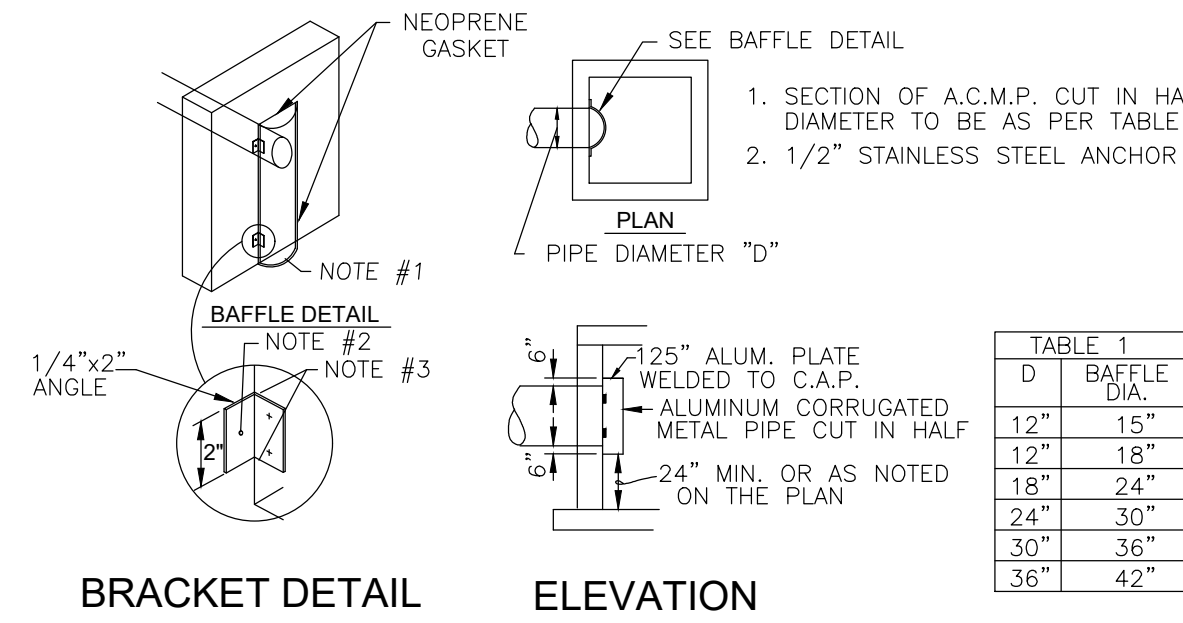
ASPHALT CONNECTION DETAIL



SANITARY SEWER AND STORM SEWER CLEAN-OUT DETAIL ON PRIVATE PROPERTY

NOTES:
ROUGH IN RISER TO 1 FOOT ABOVE FINISHED GRADE AND CAP.
CUT BACK TO FINISHED GRADE UPON COMPLETING THE PROJECT.

N.T.S.



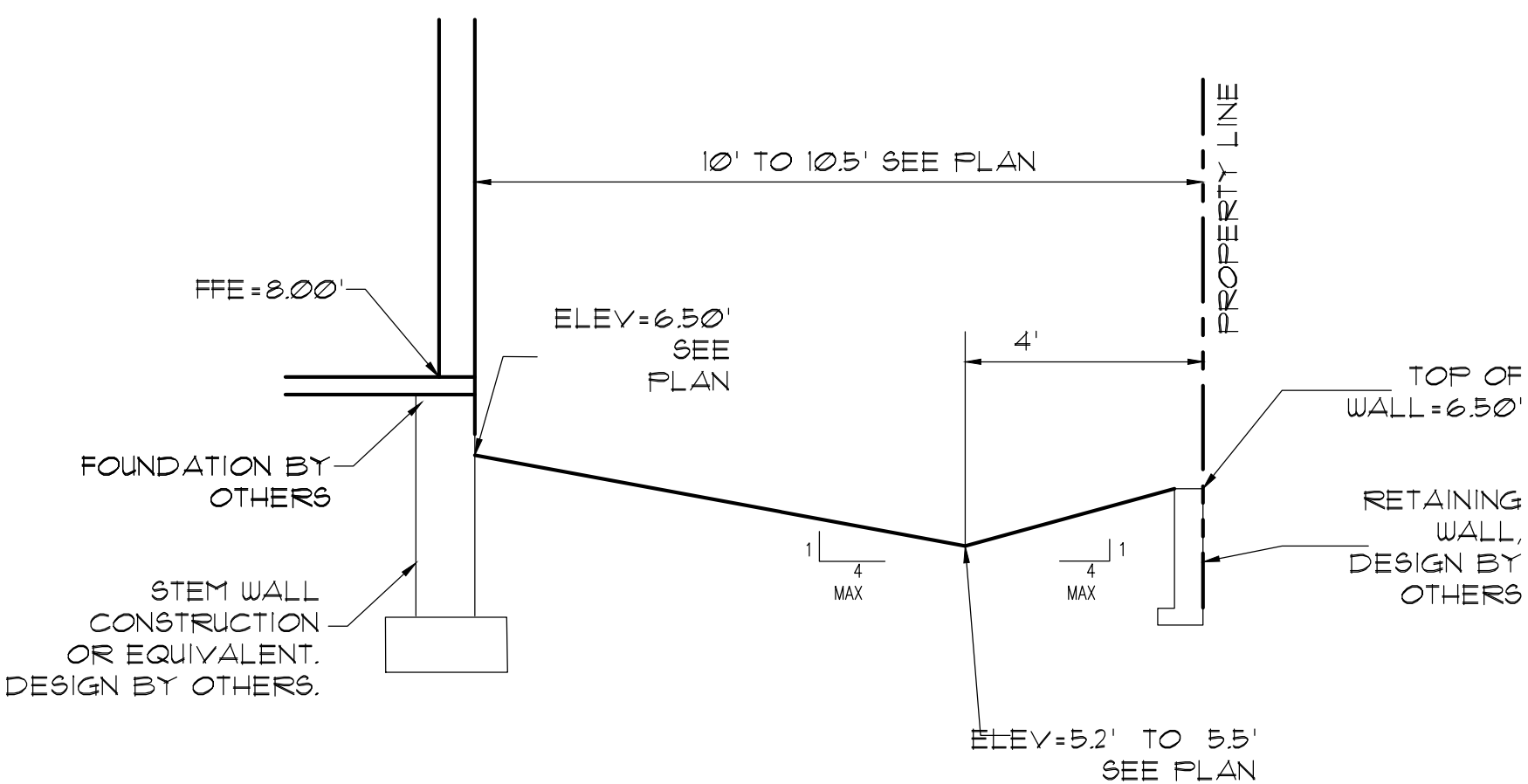
BRACKET DETAIL

ELEVATION

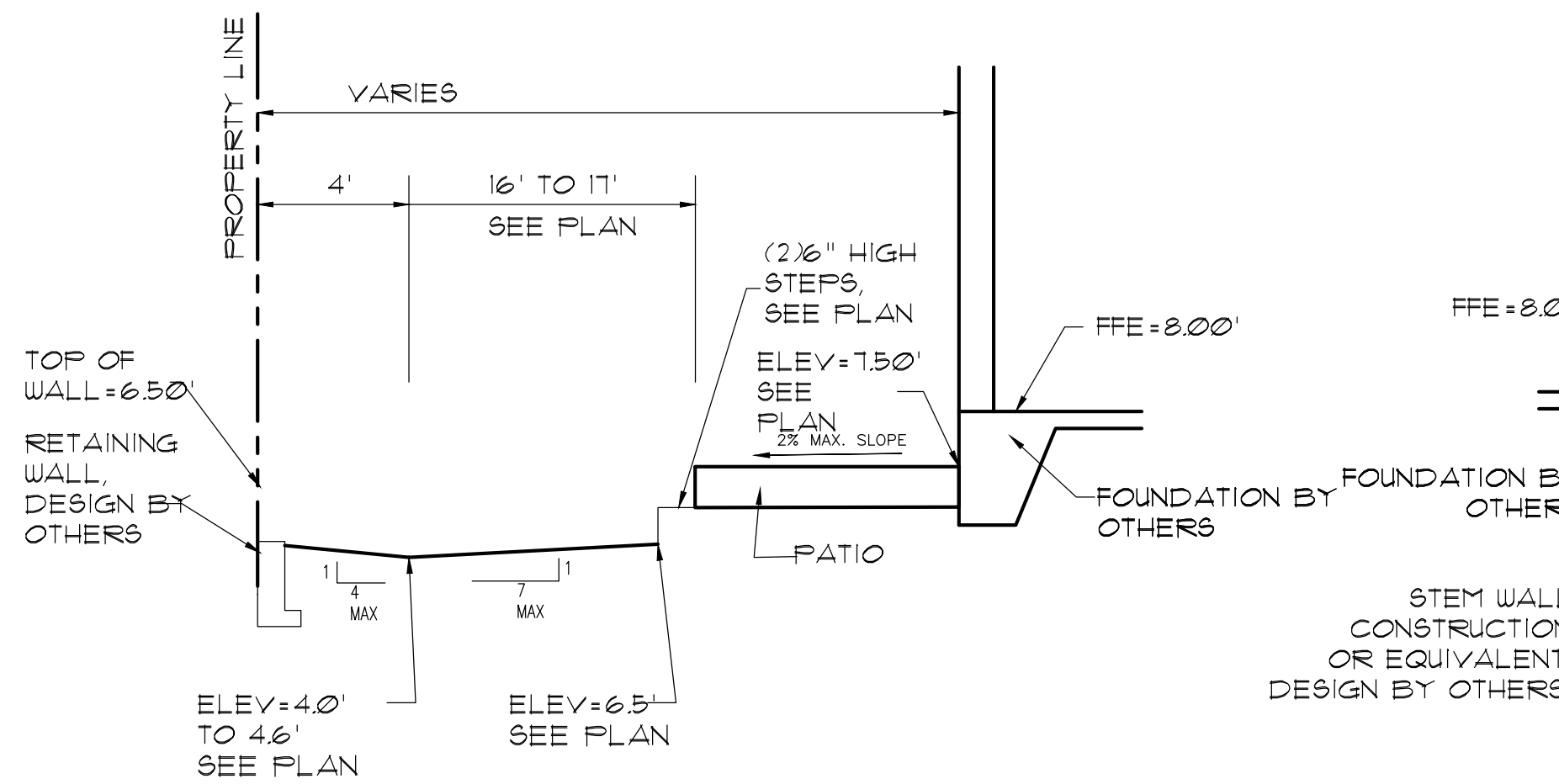
POLLUTION RETARDANT BAFFLE

- NOTES:
- CONTRACTOR TO VERIFY THAT BAFFLE WILL FIT STRUCTURE I.D.
 - BAFFLE REQUIRED AT CATCH BASIN CONNECTED DIRECTLY TO PROPOSED DRAINFIELD.
 - PROVIDE NEOPRENE GASKET ON SIDES AND TOP.
 - PROVIDE SHOP DRAWINGS PRIOR TO ORDERING.

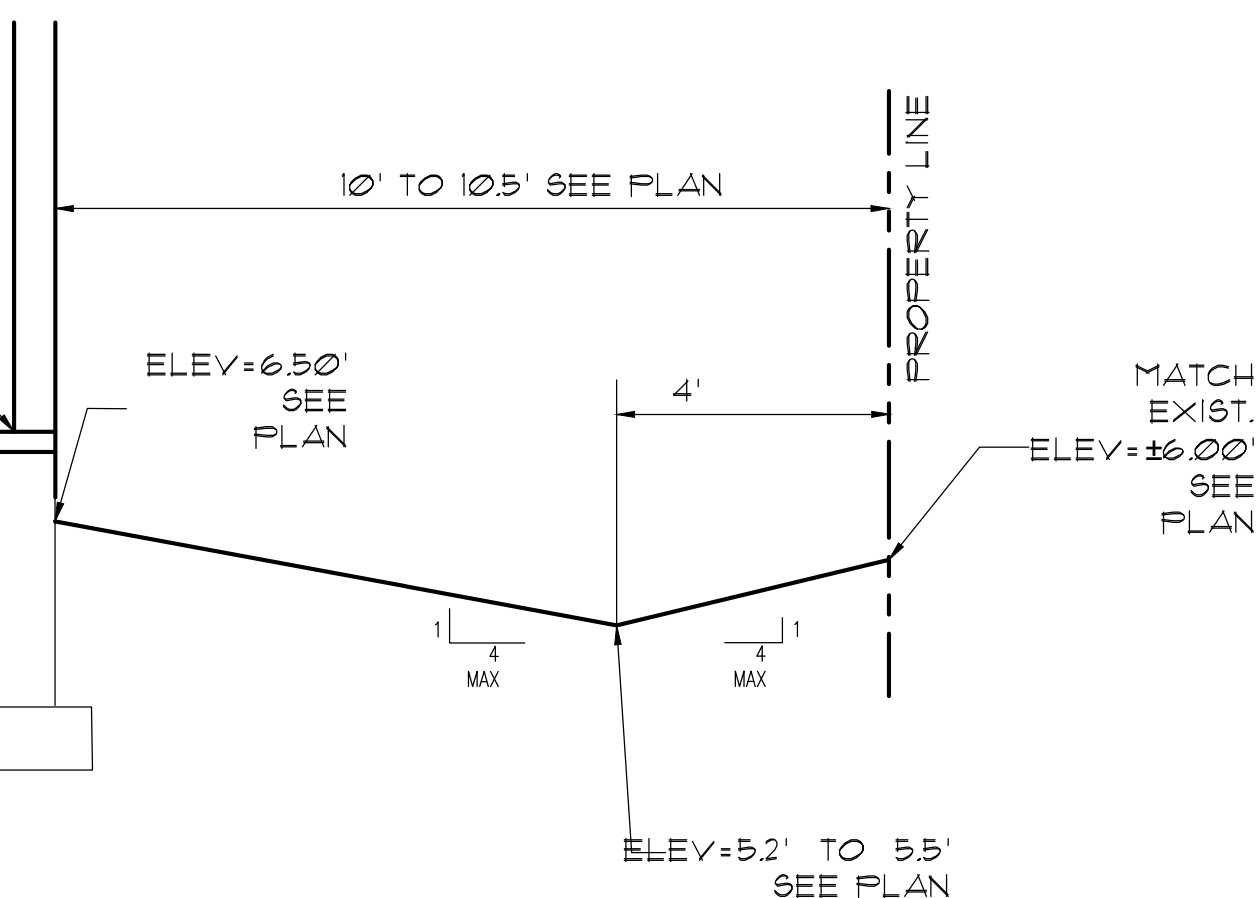
N.T.S.



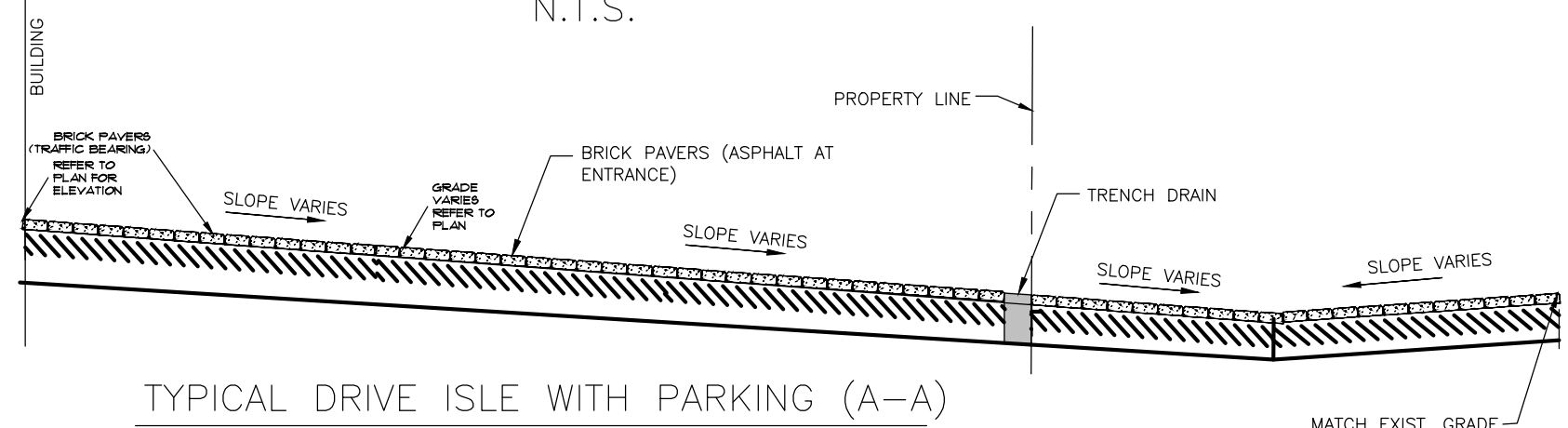
TYPICAL SECTION B-B
N.T.S.



TYPICAL SECTION C-C
N.T.S.



TYPICAL SECTION D-D
N.T.S.



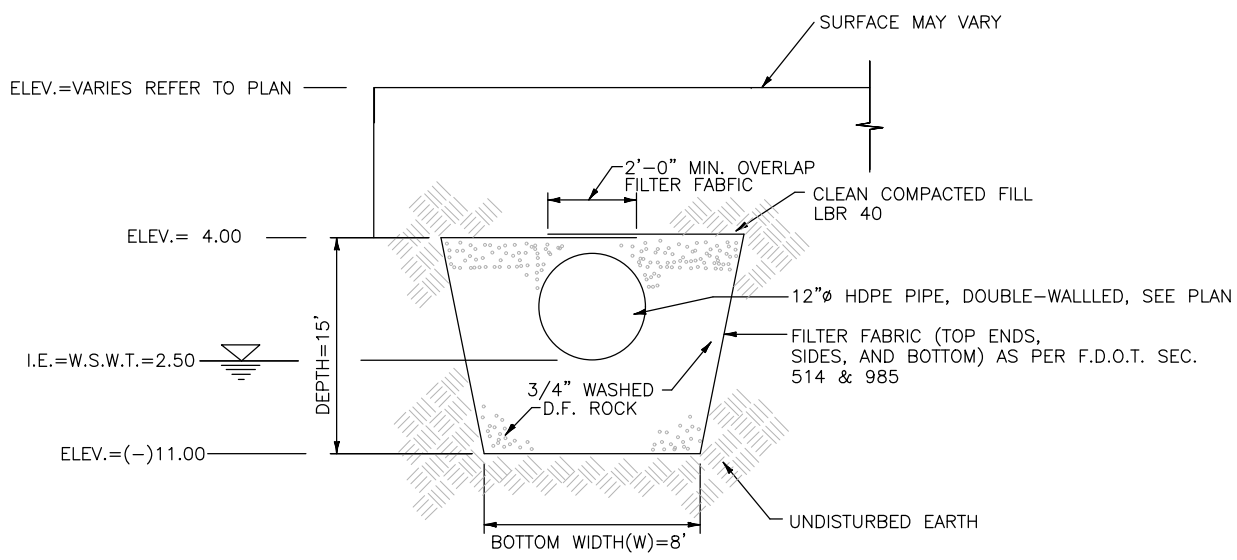
TYPICAL DRIVE ISLE WITH PARKING (A-A)
N.T.S.

TYPICAL ONSITE PAVING SECTION:
1-1/2" Type S-III Asphaltic Concrete (IN 2 LIFTS) Tack Coat at 0.05 gal/sy
8" Baserock (6" max lifts) (LBR 100)
12" Compacted Subgrade (LBR 40)
Both base and subbase shall be compacted to 98% Dry Density per AASHTO T-180.

OR

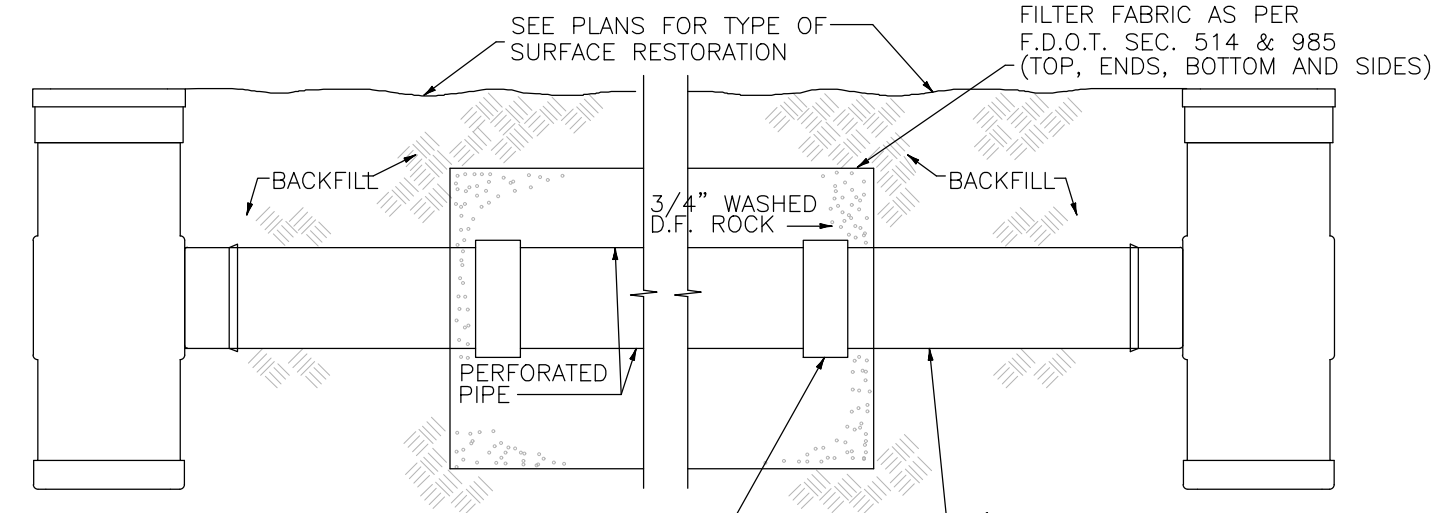
TYPICAL ONSITE BRICK PAVER SECTION:
BRICK PAVERS (TRAFFIC BEARING)
1-1/2" SAND SETTING BED (COMPACTED TO 98% DENSITY)
8" Baserock (6" max lifts) (LBR 100)
12" Compacted Subgrade (LBR 40)
HEADER CURB (3000 PSI)
Both base and subbase shall be compacted to 98% Dry Density per AASHTO T-180.

TYPICAL SECTION A-A
N.T.S.

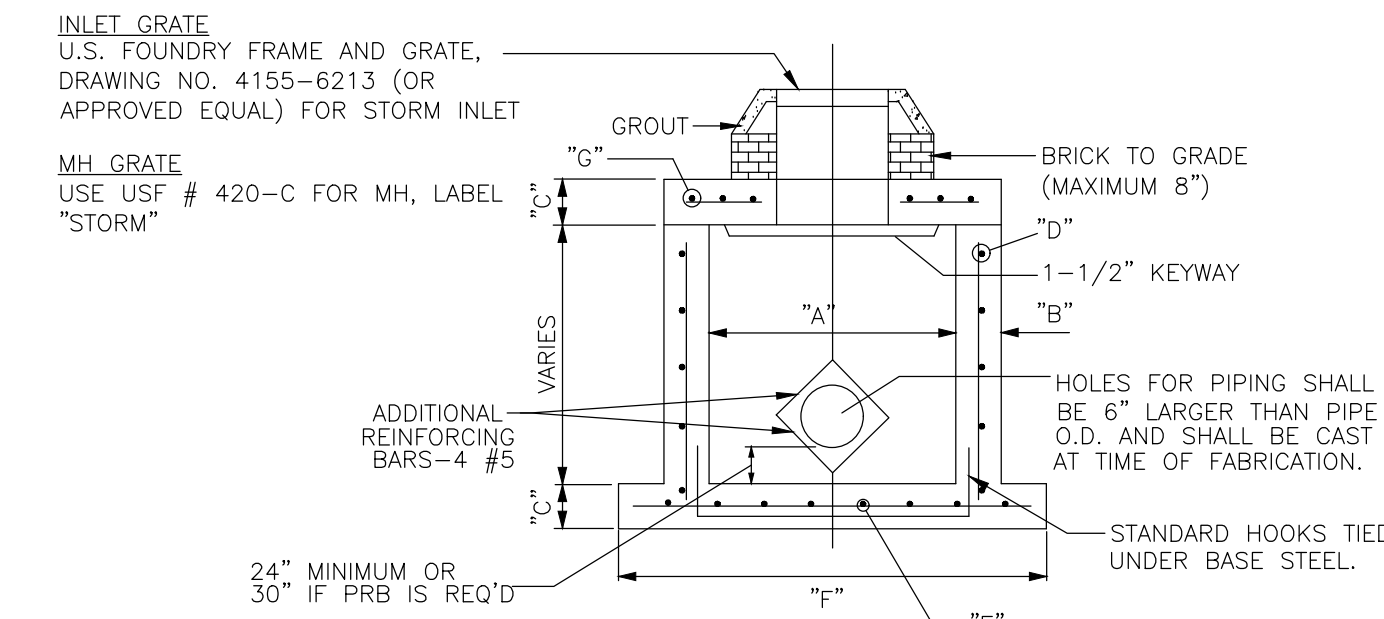


TYPICAL EXFILTRATION TRENCH SECTION
N.T.S.

- NOTE:
- TOP OF TRENCH WIDTH MAY BE GREATER THAN BOTTOM WIDTH DUE TO THE SOIL'S ANGLE OF REPOSE.
 - ELEVATION SHOWN ARE IN N.A.V.D. 1988
 - SHORING MAY BE REQUIRED, INCLUDE PRICE IN BID.



TYPICAL EXFILTRATION TRENCH WITH NYLOPAST CATCH BASINS
N.T.S.

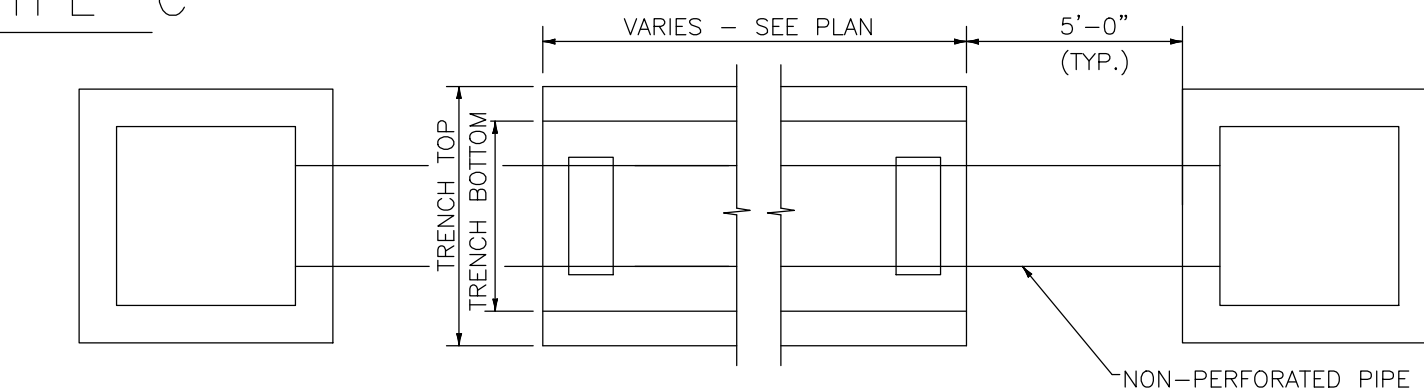


SECTION

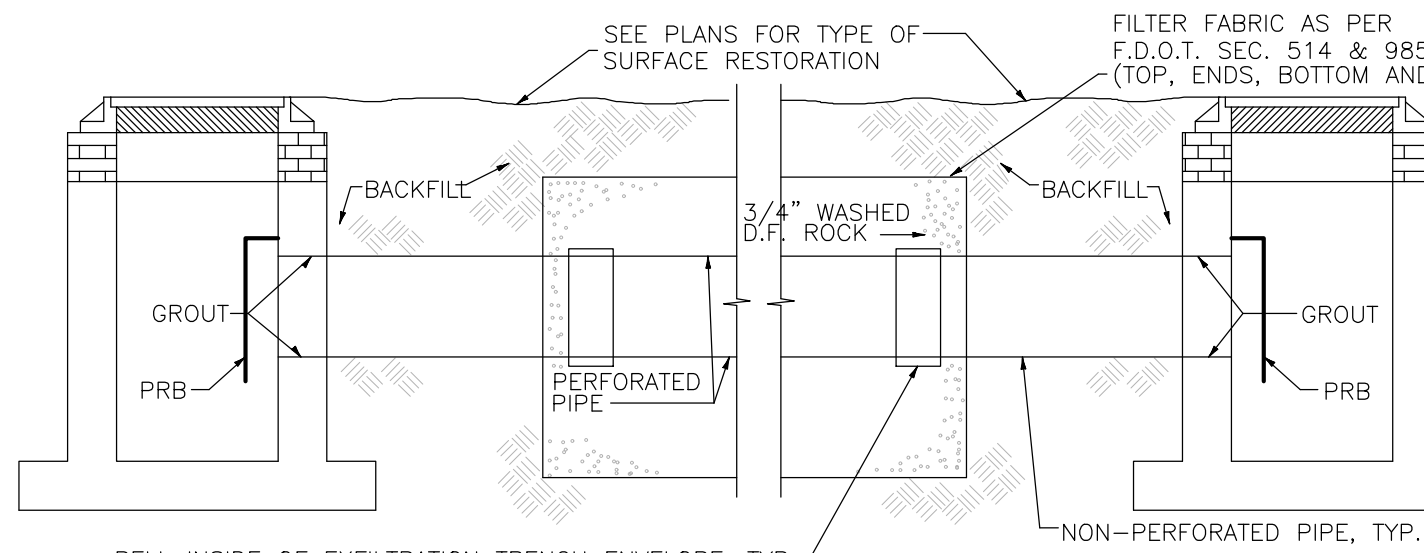
"A"	"B"	"C"	"D"	"E"	"F"	"G"
4' X 4'	8"	8"	#5@12"CCEW	#5@12"CCEW	7'-4" Ø	#5@8"CCEW

PRECAST CATCH BASIN - TYPE "C"

- NOTES:
- REINFORCING STEEL TO BE PER ASTM C-478
 - GRADE 40 STEEL OR GREATER
 - CONTRACTOR SHALL FOLLOW FDOT INDEX 200, 201 AND 232 FOR STRUCTURE #17, 18, AND 19
 - GROUT INSIDE STRUCTURE BETWEEN TOP SLAB AND WALLS INCLUDING ALL BRICK WORK.

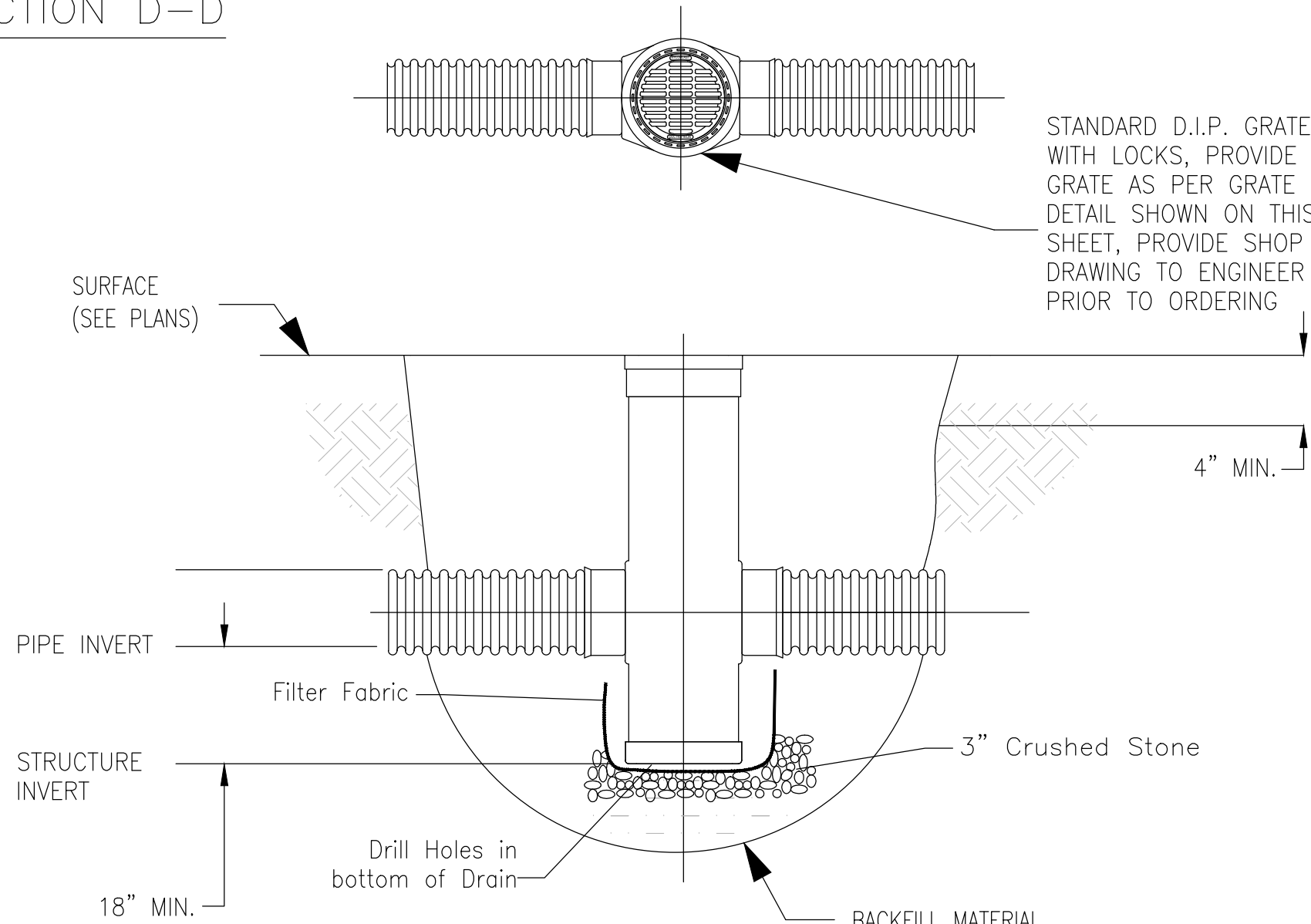


PLAN



SECTION

TYPICAL EXFILTRATION TRENCH



NYLOPAST CATCH BASIN DETAIL
N.T.S.

- NOTES:
- PROVIDE SHOP DRAWINGS PRIOR TO ORDERING.

ATTENTION IS DIRECTED TO THE FACT THAT THESE PLANS MAY HAVE BEEN REDUCED IN SIZE BY REPRODUCTION. THIS MUST BE CONSIDERED WHEN OBTAINING SCALED DATA.

Sunshine
Call 811 or www.sunshine11.com two full business days before digging to have utilities located and marked.

THIS DOCUMENT, DETAILS, & SPECIFICATIONS SHALL NOT BE USED BY ANYONE, OR FOR OTHER PROJECTS, OR FOR ADVERTISING OR PROMOTIONAL PURPOSES WITHOUT THE WRITTEN PERMISSION FROM GLOBE ENGINEERING, INC.

DRC
PZ25-12000046
04/15/2026

TOWNHOMES

3305 SE 5TH STREET
POMPANO BEACH, FL 33062

SECTIONS AND DETAILS

Globe Engineering, Inc.

Civil Engineering - Land Planning - Construction Management

4839 SW 148 Avenue, Suite 507
Fort Lauderdale, FL 33330

Phone: 954-318-7628
www.civil-engineer.us

FBPP REGISTRY No. 8604

THIS ITEM HAS BEEN DIGITALLY SIGNED AND SEALED BY MARTIN PILOTE USING A DIGITAL SIGNATURE AND DATE. PRINTED COPIES OF THIS DOCUMENT ARE NOT CONSIDERED SIGNED AND SEALED AND THE SIGNATURE MUST BE VERIFIED ON ANY ELECTRONIC COPIES. PRINTED COPIES ARE ONLY VALID IF IT INCLUDES AN INK ORIGINAL HAND SIGNATURE.

MARTIN PILOTE
LICENSE
No 55992
STATE OF FLORIDA
PROFESSIONAL ENGINEER

DESIGNED: MP
DATE: 2/9/2026
DRAWN: SKC
PROJECT NO: 2025-011
DRAWING NAME: C-5
SHEET NO: C-5 OF 11